

Safety

Handle with Care: Do not drop, hit, or puncture the product.

Storage and Operating Environment: Do not store or use this product in environments with excessive dust, high/low temperatures, high humidity, or strong vibrations, as these conditions may damage the device.

Cleaning: Do not use corrosive chemicals or solvents to clean the product.

Maintenance: There are no user-serviceable parts inside. If the product malfunctions, please contact the seller to return it to our company for repair.

Warning

Child Safety: Keep the product, its accessories, and packaging materials away from children. Failure to do so may result in a choking hazard.

Fire Hazard: Do not dispose of the product in fire, as it may cause an explosion.

Battery Maintenance: If the product has not been used for an extended period, please fully charge the battery before use.

Table Of Contents

| | |
|-----------------------------------|----|
| Getting to Know Your Camera | 1 |
| Standard | 1 |
| Charging the Battery | 1 |
| Component Introduction | 2 |
| Getting Started | 5 |
| Inserting Memory Card | 5 |
| Loading Battery | 6 |
| Photo | 7 |
| Video | 10 |
| PlayBack | 14 |
| Connecting to the Computer | 16 |
| Technical Parameters | 17 |
| Trouble Shooting | 18 |

Getting to Know Your Camera

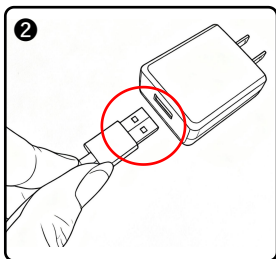
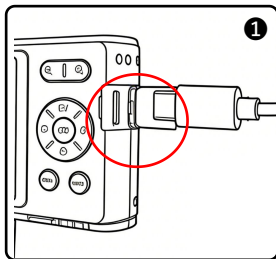
Standard

| | | |
|----------------|-------------|-------------|
| Digital Camera | Battery | USB Cable |
| Charger | Wrist Strap | User Manual |

Charging the Battery

When using this camera for the first time, please be sure to fully charge the battery.

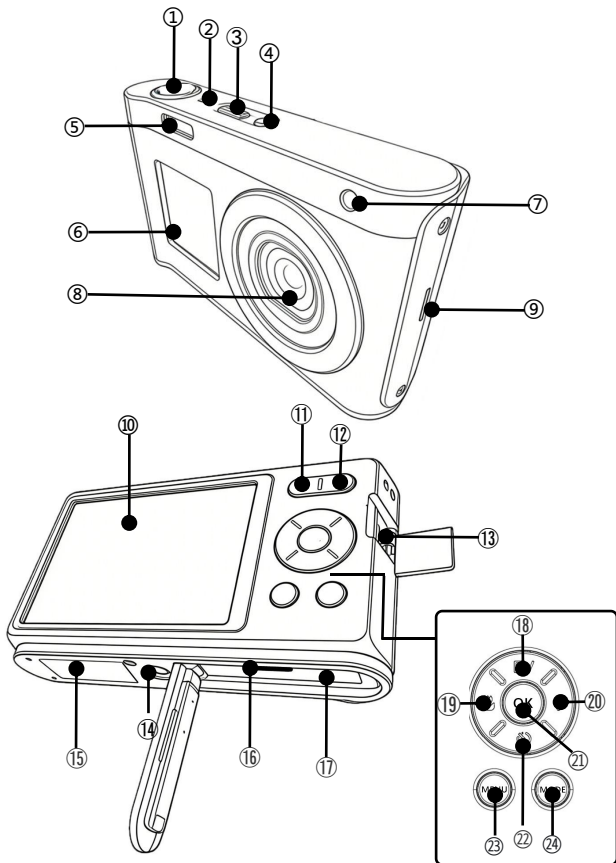
1. When the battery is low, take out the USB cable.
2. Connect the USB cable to the camera's port and the power adapter in the order shown in the diagram.
3. The red indicator light will remain solid while charging and will turn off once charging is complete.



Note:

1. Please use a 5V/2A power adapter for charging.
2. If the USB cable is disconnected while the device is charging and operating simultaneously, the device will automatically

Component Introduction

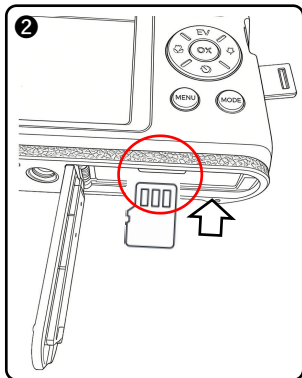
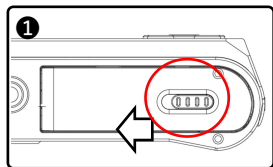


| No. | Name | Description |
|-----|---------------------------------|--|
| ① | Photo/Video Button | Dual-stage button. In Photo mode: Light press to focus, full press to take a photo. In Video mode: Full press to start/stop recording. |
| ② | Microphone | Records audio. |
| ③ | Power Button & Status Indicator | Power Button: Power On/Off. Status Indicator: <ul style="list-style-type: none"> • Solid Green: Standby • Flashing Green: Recording • Single Green Flash: Photo taken • Solid Red: Charging • Red Light Off: Fully charged. |
| ④ | Screen Switch Button | Toggle display between the main screen and front (sub) screen. |
| ⑤ | LED Fill Light / Flash | Provides additional lighting. |
| ⑥ | Sub Screen (Front) | Live lens preview. |
| ⑦ | AF Assist Lamp | Assists with auto-focus in low light. |
| ⑧ | Lens | Captures the image. |
| ⑨ | Speaker | Plays back audio. |
| ⑩ | Main Screen | Lens preview and playback of photos/videos. |
| ⑪ | W (Zoom Out) Button | Widens the field of view (Zoom out). |
| ⑫ | T (Zoom In) Button | Narrows the field of view (Zoom in). |
| ⑬ | Type-C USB Port | For connecting a USB cable. |
| ⑭ | 1/4" Universal Tripod Mount | For tripod installation. |
| | | |

| | | |
|---|-----------------------------------|---|
| ⑮ | Model Label | Contains Model Name, SN (Serial Number), etc. |
| ⑯ | Memory Card Slot | For installing a storage card. |
| ⑰ | Battery Compartment | For installing the battery. |
| ⑱ | Up / EV Button | In Menu: Move up. In Preview: Open EV exposure menu. During Video Playback: Decrease volume. When Paused: Stop playback. |
| ⑲ | Left / Focus Mode Button | In Menu: Move left. In Preview: Open Focus Mode menu. During Video Playback: Rewind. |
| ⑳ | Right / Fill Light & Flash Button | In Menu: Move right. In Video Preview: Toggle fill light On/Off. In Photo Preview: Open Flash menu. During Video Playback: Fast forward. |
| ㉑ | OK (Confirm) Button | In Menu: Confirm selection. During Video Playback: Pause playback. |
| ㉒ | Down / Self-Timer Button | In Menu: Move down. In Preview: Open Self-timer menu. During Video Playback: Stop playback. |
| ㉓ | Menu Button | Open/Exit the settings menu. |
| ㉔ | Mode Button | Switch between Photo, Video, and Playback modes. |

Getting Started

Inserting Memory Card

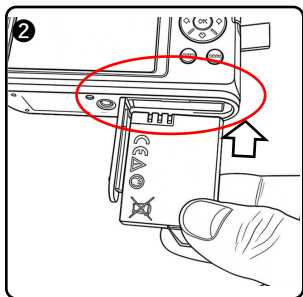
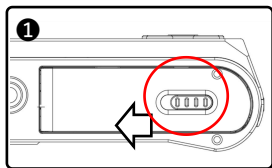


1. Open the battery cover.
2. Insert the memory card into the slot in the direction shown until it clicks into place.
3. To remove the memory card, press it down and it will automatically eject.
4. Close the battery cover.

Note:

1. Before using the camera for the first time, please format the TF card on this device. We strongly recommend using a U3-rated TF card with a capacity of 256GB or less.
2. Do not forcibly remove the TF card while the device is in operation; doing so may lead to data loss or system malfunction.

Loading Battery

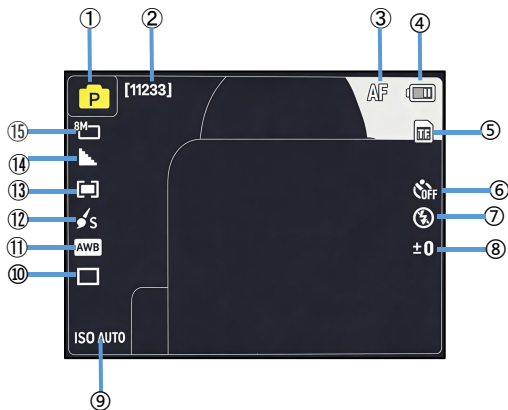


1. Open the battery cover.
2. Insert the batteries in the direction shown.
3. Close the battery cover.

Note:

1. Never use force to open the battery compartment or remove the batteries.
2. Ensure batteries are inserted into the slot in the correct direction.

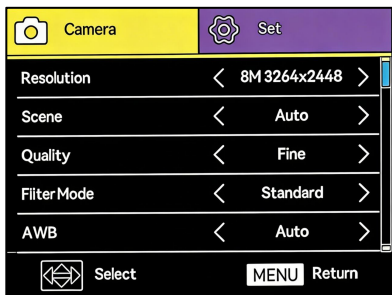
Photo



| | | | |
|---|---------------------|---|-------------------|
| ① | Photo Mode | ⑨ | ISO Value |
| ② | Remaining Shots | ⑩ | Burst Mode Status |
| ③ | Focus Mode (AF/MF) | ⑪ | White Balance |
| ④ | Battery Level | ⑫ | Filter Mode |
| ⑤ | Memory Card Status | ⑬ | Metering Mode |
| ⑥ | Self-timer Status | ⑭ | Image Quality |
| ⑦ | Flash Status | ⑮ | Resolution |
| ⑧ | Exposure Value (EV) | | |

1. Long press the [Power Button] for 3 seconds to turn on the device. It will enter the main preview interface in Photo Mode by default.
2. Short press the [Menu Button] to access the settings list and configure your desired options.
3. Half-press the [Photo/Video Button] to focus. A green frame will appear once focus is locked. Fully press the button to take a photo.

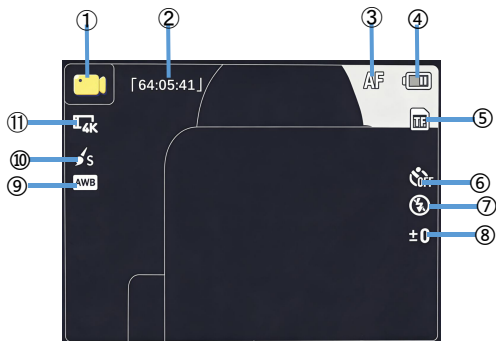
Photo Menu



| | |
|-------------|---|
| Resolution | 72M 9856*7392/64M 9200*6900 32M 6480*4860/16M 4608*3456 8M 3264*2448 |
| Scene | Auto / Scenery / Portrait / Sport / Night Portrait / Night Scenery / Party / Sunset / Backlight / Fireworks / Beauty |
| Quality | Super Fine / Fine / Standard |
| Filter Mode | Standard/Color Boost(Red)/Color Boost(Green)/Color Boost(Blue)/Color Boost(Orange)/Color Boost(Yellow)/Color Boost(Purple)/Sepia/Monochrome/pen/Vivid/ |
| AWB | Auto/Daylight/Cloudy/Tungsten/Fluorescent |

| | |
|--------------|---------------------------|
| ISO | Auto/100/200/400/800/1600 |
| Face Detect | On / Off |
| Metering | Multi/Center/Spot |
| Burst Mode | Single/Burst Mode |
| Sharpness | Standard / Sharp / Soft |
| Anti-Shake | On / Off |
| Date Stamp | On / Off |
| Quick Review | Off/2 Seconds/5 Seconds |

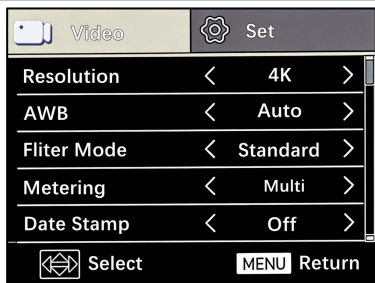
1. Long-press the [Power Button] for 3 seconds to turn on the device. It will enter the main preview interface in Photo Mode by default.
2. Short-press the [Menu Button] to access the function menu list.
3. Short-press the [Up / EV Button] or [Down / Self-Timer Button] arrow keys to highlight your desired function.
4. Use the [Left / Focus Mode Button] or [Right / Fill Light & Flash Button] arrow keys to toggle through options, then short-press the [OK (Confirm) Button] to save your selection.
5. Short-press the [Menu Button] to exit the menu and return to the preview screen.



| | | | |
|---|--------------------------|---|----------------------|
| ① | Video Mode | ⑦ | Fill Light Status |
| ② | Remaining Recording Time | ⑧ | Exposure Value |
| ③ | Focus Mode | ⑨ | White Balance Status |
| ④ | Battery Status | ⑩ | Filter Mode Status |
| ⑤ | Memory Card Status | ⑪ | Current Resolution |
| ⑥ | Time-lapse Status | | |

1. Long-press the [Power Button] for 3 seconds to turn on the device. It will enter the main preview interface and default to Photo Mode.
2. Short-press the [Mode Button] to switch to Video Mode.
3. Short-press the [Menu Button] to enter the settings list and configure your desired options.
4. Press the [Photo/Video Button] to start or stop recording.
5. During recording, short-press the [Down / Self-Timer Button] to pause or resume the video.

Video Menu

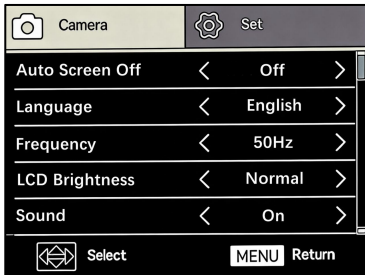


| | |
|-----------------------|--|
| Resolution | 4K/2K/1080P30/1080P60/720P60 |
| AWB | Auto/Daylight / Cloudy / Tungsten / Fluorescent |
| Filter Mode | Standard/Color Boost(Red)/Color Boost(Green)/Color Boost(Blue)/Color Boost(Orange)/Color Boost(Yellow)/Color Boost(Purple)/Sepia/Monochrome/pen/Vivid/ |
| Metering | Multi/Center/Spot |
| Date Stamp | On / Off |
| Time-lapse video | Off/1 Second/3 Seconds/ 5 Seconds |
| Recording Sensitivity | Soft/Normal/Strong |

1. Long-press the [Power Button] for 3 seconds to turn on the device. It will enter the main preview interface and default to Photo Mode.
2. Short-press the [Mode Button] to switch to Video Mode.
3. Short-press the [Menu Button] to access the Function Menu list.
4. Use the [Up / EV Button] or [Down / Self-Timer Button] to scroll and highlight your desired function.

5. Use the [Left / Focus Mode Button] or [Right / Fill Light & Flash Button] to select a specific setting, then short press the [OK (Confirm) Button] to save your choice.
6. Short press the [Mode Button] to exit the menu and return to the preview screen.

Setup



| | |
|--------------------|--|
| Auto Screen Off | Off/3 Minutes/5 Minutes/10 Minutes |
| Language | English/German/French/Spanish/Italian/ Turkish/Russian/Portuguese/Dutch/ Simplified Chinese/Traditional Chinese/Japanese/Polish |
| Frequency | 50HZ/60HZ |
| LCD Brightness | Soft/Normal/Strong |
| Sound | On/Off |
| Shutter sound | On/Off |
| Power-on/off sound | On/Off |
| Set Date | Set Date |

| | |
|---------|--------------------------|
| Format | Cancel/OK |
| Default | Cancel/OK |
| Version | Current firmware version |

1. Long-press the [Power Button] for 3 seconds to power on. The device will enter the main preview interface in Photo Mode by default.
2. Short-press the [Menu Button] to access the function menu list.
3. Short-press the [Right / Fill Light & Flash Button] to navigate to the "Settings" menu.
4. Use the [Up / EV Button] or [Down / Self-Timer Button] to scroll to your desired function.
5. Use the [Left / Focus Mode Button] or [Right / Fill Light & Flash Button] to select a setting, then short-press the [OK (Confirm) Button] to confirm your selection.
6. Short-press the [Menu Button] to exit the function menu.

Play Back



1. Long-press the [Power Button] for 3 seconds to enter the preview interface. The device enters Photo Mode by default.
2. Short-press the [Mode Button] to switch to Playback Mode.
3. Use the [Left / Focus Mode Button] or [Right / Fill Light & Flash Button] to switch between files.
4. Video Playback:
 - Play/Pause: Short-press the [OK (Confirm) Button] .
 - Adjust Volume: Short-press the [Up / EV Button] or [Down / Self-Timer Button] .
 - Fast Forward/Rewind: Short-press the [Left / Focus Mode Button] or [Right / Fill Light & Flash Button] .
 - Stop Playback: Short-press the [OK (Confirm) Button] to pause, then short-press the [Down / Self-Timer Button] to stop.

Photo Viewing:

Zoom In: Short-press the [T (Zoom In) Button] .

Pan/Move: While zoomed in, use the [Up / EV Button] or [Down / Self-Timer Button] , [Left / Focus Mode Button] or [Right / Fill Light & Flash Button] to move the view.

Thumbnail View: Short-press the [W (Zoom Out) Button] to switch to the multi-grid (thumbnail) view.

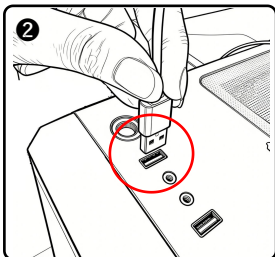
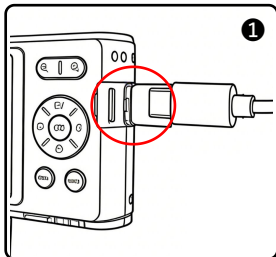
File delete/protect



1. Long-press the [Power Button] for 3 seconds to enter the preview interface. The device enters Photo Mode by default.
2. Short-press the [Mode Button] to switch to Playback Mode.
3. Short-press the [Menu Button] to access the Function Menu list.
4. Use the [Up / EV Button] or [Down / Self-Timer Button] to scroll to your desired function.
5. Use the [Left / Focus Mode Button] or [Right / Fill Light & Flash Button] to select a setting, then short-press the [OK (Confirm) Button] to confirm your selection.
6. Short-press the [Menu Button] to exit the function menu.

Note: Locked files cannot be deleted; they must be unlocked manually.

Connecting to the Computer



MSDC Mode

1. Long-press the [Power Button] for 3 seconds to turn on the device and enter the main preview interface.
2. Take out the USB cable and connect it to the USB ports of the device and the computer respectively.
3. When the camera displays the "MSDC" and "PC Camera" options, short-press the [OK (Confirm) Button] to select the Mass Storage (Connect to PC) function.
4. The camera preview screen will enter Removable Disk mode, and a "Removable Disk" window will appear on your computer.

PC Camera

1. Long-press the [Power Button] for 3 seconds to turn on the device and enter the main preview interface.
2. Take out the USB cable and connect it to the USB ports of the device and the computer respectively.
3. When the camera displays the "MSDC" and "PC Camera" options, short-press the [Down / Self-Timer Button] and the [OK (Confirm) Button] to select the PC Camera function.
4. The camera preview will enter PC Camera mode. Open your computer's video software to view the live feed.

Note: While using the camera as a PC Camera, other operations are disabled. Video recording and photo functions must be performed via third-party software.

Technical Parameters

| | |
|---------------------|--|
| Sensor | 13.0MP CMOS |
| Aperture | F no.2.2 |
| Lens | f=3.37mm |
| Focus Range | 10CM~INF |
| Lens Type | Digital zoom lens |
| Zoom | 18X |
| External Storage | Support TF Card(U3), Maximum 256GB |
| Screen | 2.88"&1.54" Dual IPS Screen |
| Video Resolution | UHD(4K):2880*2160(24fps) QHD(2K):2560*1440(30fps) FHD(1080P):1920*1080(60fps) FHD(1080P):1920*1080(30fps) HD(720P):1280*720(60fps) |
| Photo Resolution | 8M/16M/32M/64M/72M |
| ISO | Auto/100/200/400/800/1600 |
| File Format | Video:MP4 Photo:JPEG |
| I/O Interface | USB |
| Speaker | Built-in |
| Microphone | Built-in |
| Battery | Li-ion battery |
| Working Temperature | 0 ~ 40 °C |

Trouble Shooting

| Trouble | Possible reason | Solution |
|--|--|--|
| Cannot power on | Battery is not inserted correctly/dead | Insert battery correctly/Charge |
| Unclear Focus | Out of focus range / lens dirty | Shooting in focus able range/Clean the lens |
| Unable to use memory card/unable to record | Card damage / TF card does not meet requirement | Replace the TF card / Format the TF Card / Use the U3 Card |
| Fail to use it as a PC Cam | USB Cable is loose / Computer system version is not compatible | Replace the USB interface / Select a compatible system |